



HOKKAIDO UNIVERSITY

北海道大学

Global Institution for Collaborative Research and Education
Global **S**tation for Indigenous Studies and Cultural Diversity

北海道大学国際連携研究教育局
先住民・文化的多様性研究グローバルステーション



HOKKAIDO UNIVERSITY

Greetings from the Director of GSI

The Global Station for Indigenous studies and Cultural Diversity (GSI) was established in April 2021 as the eighth Global Station of the Global Institution for Collaborative Research and Education (GI-CoRE), headed by the President of Hokkaido University. Following its inaugural year, Professor Joe Watkins from the United States of America arrived in July 2022 as the first full-time foreign professor to conduct joint research on Indigeneity through a comparative study of the Indigenous peoples of the USA and the Ainu people of Hokkaido. That same month, Associate Professor Zhang Tianxin from Peking University joined the GSI for three months as an invited faculty member to conduct fieldwork and joint research on Indigenous cultural heritage in Hokkaido and Okinawa.

One of the key roles of the GSI is to provide a platform for international collaborative research on Indigenous Peoples and Cultural Diversity. The island of Hokkaido is part of the traditional homelands of the Ainu, the Indigenous people of Japan, and, therefore, Indigenous land. We aim to provide an opportunity for researchers from all over the world to gather in Sapporo, the capital city of Hokkaido, and to nurture the seeds of new collaborative research.

Our inaugural symposia and lecture series had to be hosted online due to the global spread of Covid-19. Despite these conditions, 133 participants from 23 universities and research institutions in 16 countries engaged in lively discussions throughout our kick-off symposium held in January 2022. Additionally, we hosted an online lecture series in April 2022 for overseas researchers unable to enter Japan at the time to introduce their research.

The GSI will continue to bring awareness to the common challenges faced by Indigenous peoples around the world, discuss effective approaches to solving these challenges, foster the next generation of researchers, and above all, lead international discussions on the nature of cultural diversity in human society.

1st October 2022.

Director of GSI / Professor, Hirofumi KATO

GSI長 挨拶

先住民・文化的多様性研究グローバルステーションは2021年4月に、北海道大学総長を局長とする国際連携研究教育局の8つ目の拠点として設立されました。設立からほぼ一年を経過し、2022年7月には、最初の外国人正規教授としてアメリカ合衆国よりJoe Watkins教授が着任し、アメリカ先住民と北海道のアイヌ民族の比較を通じて先住性に関する共同研究をスタートさせています。また先住民文化遺産の領域では、北京大学の張天新准教授が7月に招へい教員として着任し、9月までの3ヶ月間にわたり北海道や沖縄でフィールドワークと共同研究を実施しました。

GSIの重要な役割の一つは、先住民と文化的多様性に関する国際共同研究のプラットフォームを提供することです。北海道は日本の先住民族であるアイヌ民族が長く暮らしてきた先住民族の大地です。その中心都市である札幌に世界各地から研究者が集い、新たな共同研究の芽を育てるきっかけを提供して行きたいと考えています。

GSIの設立当初は、新型コロナウイルスの世界的蔓延の影響を受けて、国際シンポジウムや連続講義もオンライン開催を余儀なくされてきました。そのような厳しい状況下でも2022年1月に開催されたキックオフシンポジウムには、16カ国の23の大学研究機関から133名が参加し、活発な議論を交わしました。来日できない海外の研究者も2022年4月から開催された連続講義を通じて、互いの研究を紹介し、新たな課題の抽出に取り組んでいます。

GSIでは、これからも世界の先住民の抱える共通課題を共有し、課題解決へ向けた効果的な取組みを協議検討すること、次世代の研究者の育成に寄与すること、そして何よりも人類社会の文化的多様性の本質について国際的な議論をリードしていきたいと考えています。

2022年10月1日

GSI代表 / 教授 加藤博文

Action Plan at GSI: Our Goals

The Global Station for Indigenous Studies and Cultural Diversity (GSI) has established an Indigenous Action Plan consisting of the five steps listed below. The plan aims to create an environment that reflects, includes, and supports Indigenous culture and the dignity of Indigenous peoples throughout the university.

Transforming Intent into Action

1 Promote understanding of Indigenous peoples:

We foster a greater understanding of Indigenous rights, including those of the Ainu people, and promote respect across the university for Indigenous peoples.

2 Provide curricula on Indigenous peoples and cultural diversity:

Through the Hokkaido Summer Institute and other initiatives, we propose and develop educational curricula that better enable students to understand the importance of Indigenous perspectives, ways of knowing, and worldviews.

3 Increase Indigenous participation in all research activities:

In addition to actively inviting researchers from Indigenous communities to international symposia and lecture series organized by GSI, we host events open to Indigenous communities outside the university to share research results and discuss issues.

4 Support early career researchers:

We aim to support the development of early career researchers. In particular, we create opportunities for Indigenous early career researchers to engage in international discussions and interact with leading scholars from different countries.

5 Support the reestablishment of Indigenous cultural landscapes:

As a campus located on traditional Ainu land, we advocate for reforms that ensure Hokkaido University's campus reflects the culture and worldview of the Ainu.

GSIアクションプラン：わたし達のゴール

先住民・文化的多様性研究グローバル・ステーションはその活動において、以下の4つのテーマで構成される「先住民アクション・プラン」を定めます。この計画は、アカデミアとしての大学コミュニティ全体に先住民族の文化と尊厳を反映、包含、支援する環境づくりを目指すものです。

1 先住民族に関する理解の促進

アイヌ民族を含む先住民族の権利を理解し、先住民族に対する畏敬の念が北海道大学内部で促進される機会を提供します。

2 先住民族に関する文化的多様性に関するカリキュラムの提供

Hokkaido Summer Institute などを通じて、先住民族の考え方や文化的多様性の重要性を理解できる教育カリキュラムの構築や提案をおこないます。

3 研究活動への先住民族の参画

GSI が企画する国際シンポジウムや連続講義に先住民族出身の研究者を積極的に招へいするほか、学外の先住民族コミュニティにも開かれた研究成果の共有や問題討議の機会を作ります。

4 人材育成への努力

若手研究者育成に努力します。とりわけ先住民族出身の若手研究者が国際的な議論を行い、各国の多彩な研究者と交流可能な機会を創出します。

5 先住民文化的景観の構築支援

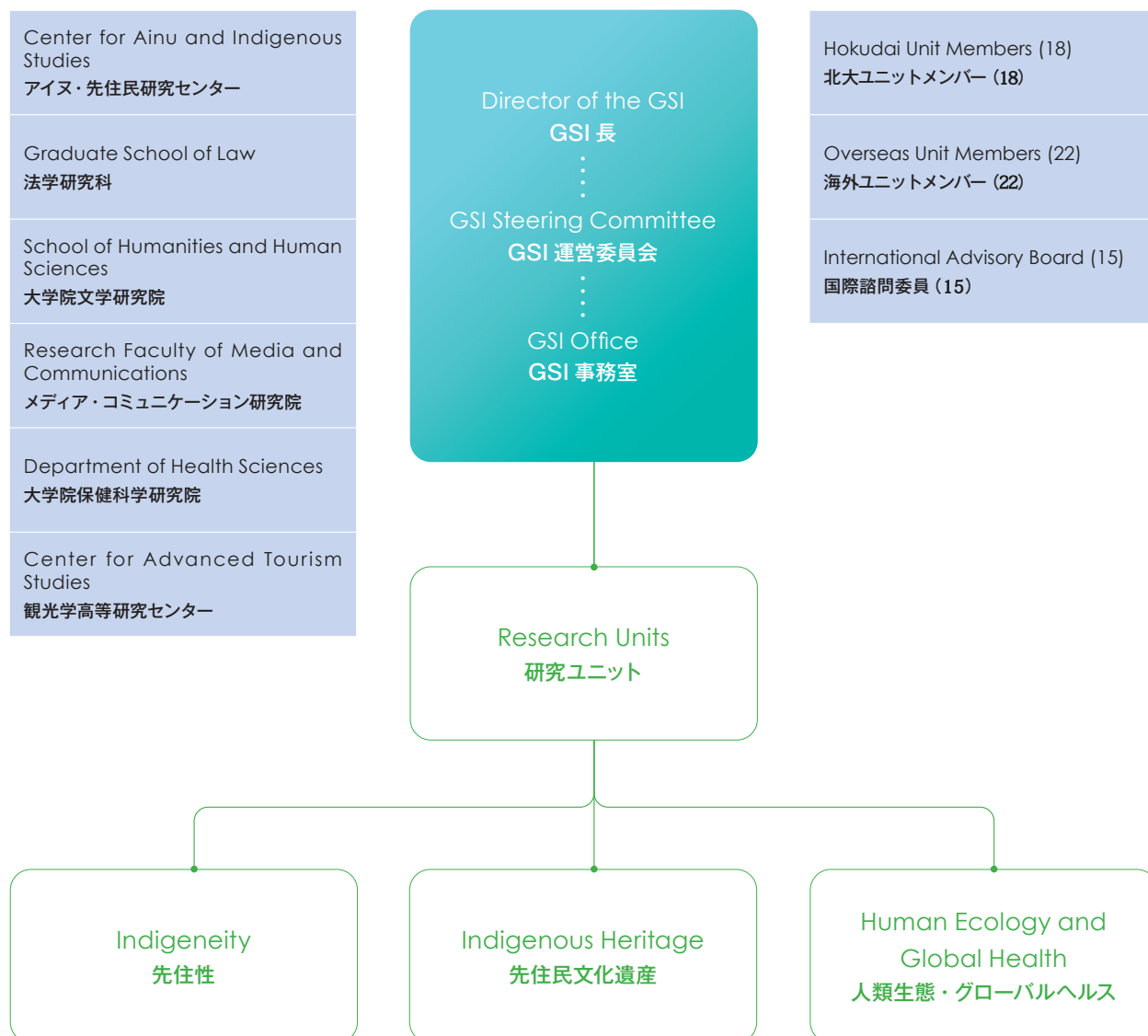
アイヌ民族の大地に位置するキャンパスとして、北海道大学のキャンパスがアイヌ民族の文化観や世界観を反映したものとなるように積極的に改革案を提案します。

GSI Structure

GSI 組織

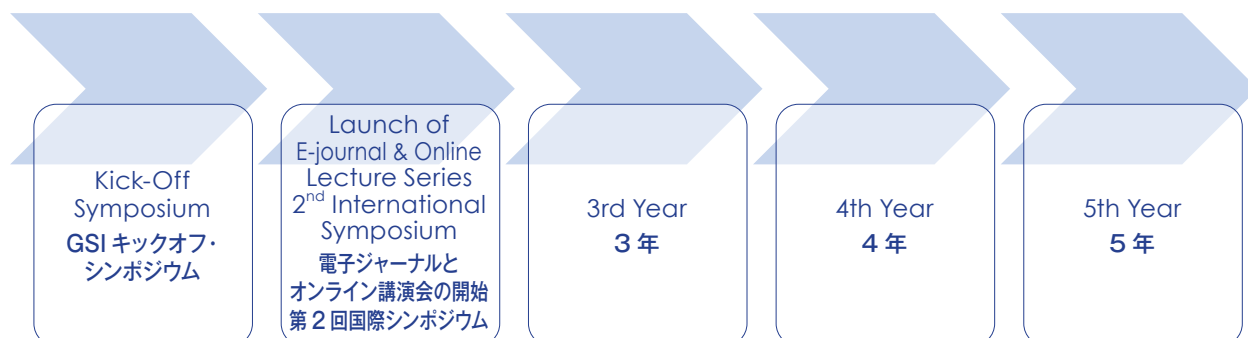
Participating Hokkaido University Organizations

学内連携組織



GSI Milestones

GSI マイルストーン



GSI Collaborative Research Areas

GSI研究ユニット 共同研究分野



Indigeneity 先住性	Indigenous Heritage 先住民文化遺産	Human Ecology and Global Health 人類生態・グローバルヘルス
<ul style="list-style-type: none"> Construct a new history of humanity, Ainu history, and Indigenous history from Indigenous perspectives 先住民族の視点から新しい人類史、アイヌ史、先住民族史の構築 Adopt an interdisciplinary approach to the study of Indigeneity 先住性に関する学際的研究 Build a model of research ethics for Indigenous studies and propose Indigenous cultural policies 先住民研究のための研究倫理モデルの構築と先住民文化政策の提案 	<ul style="list-style-type: none"> Address issues related to the features, conservation, and use of Indigenous cultural heritage 先住民族の文化遺産の特徴、保存、利用に関する研究課題への対応 Conduct an international comparative study of Indigenous cultural heritage and related intellectual property rights 先住民族の文化遺産と関連する知的財産権に関する国際比較研究 Conduct an international comparative study on Indigenous cultural heritage and tourism, including Ainu cultural heritage アイヌ文化遺産を含む先住民文化遺産と観光に関する国際比較研究 	<ul style="list-style-type: none"> Conduct an international comparative study of traditional resource management in Indigenous societies 先住民社会における伝統的資源管理に関する国際比較研究 Conduct an international comparative study of the ecology of child development, food systems, and nutrition in Indigenous societies 先住民社会における子どもの発達、食糧システム、栄養の生態に関する国際比較研究 Build regional models and produce policy proposals for the conservation of cultural diversity 文化的多様性の保存のための地域モデルの構築と政策提言

GSI Network

1 University of Oxford



オックスフォード大学

5 University of Helsinki



ヘルシンキ大学

2 University of Oslo



オスロ大学

3 Uppsala University



ウプサラ大学

4 Lund University



ルンド大学

6 Moscow State University



モスクワ国立大学

7 Irkutsk State University



イルクーツク国立大学



8 Peking University



北京大学

12 University of Alaska



アラスカ大学

14 University of Oregon



オレゴン大学

12

13

14

15

13 Simon Fraser University



サイモンフレーザー大学

10 Far Eastern Federal University



極東連邦大学

9 National Taiwan University



国立台湾大学

11 Australian National University



オーストラリア国立大学

15 University of Arizona



アリゾナ大学

Unit Members

ユニットメンバー

Indigeneity Research Unit

Hokudai Unit



Professor Hirofumi KATO
Center for Ainu and
Indigenous Studies
Letters



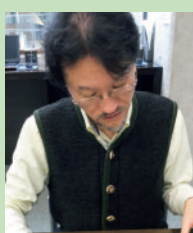
Professor Yasuo TSUJI
Graduate School of Law
Laws



Associate Professor
Ken-ichi OCHIAI
Center for Ainu and
Indigenous Studies
Laws



Professor Jeffry GAYMAN
Research Faculty of Media
and Communication
Education



Professor
Akihisa TANIMOTO
Graduate School of
Humanities and Human
Sciences
History



Associate Professor
Mai ISHIHARA
Center for Ainu and
Indigenous Studies
Cultural anthropology,
indigenous research



Professor
Masato YOSHIKAI
Graduate School of
Humanities and Human
Sciences
Chinese History

Overseas Unit



Professor Maa-ling CHEN
National Taiwan University
Department of
Anthropology
Archaeology



Professor Sho KONISHI
University of Oxford
Associate Professor in
Modern Japanese History
Director of the Nissan
Institute of Japanese Studies
History



Professor Neil PRICE
Uppsala University
Department of Archaeology
and Ancient History
Archaeology



Professor
Chih-Hua CHIANG
National Taiwan University
Department of
Anthropology
Archaeology



Professor Mika LAVENTO
University of Helsinki
Department of Culture
Archaeology



Professor Rick SHULTING
University of Oxford
School of Archaeology
Archaeology



Professor Chris GOSDEN
University of Oxford
School of Archaeology
Archaeology



Dr. Carl-Gösta OJALA
Uppsala University
Department of Archaeology
and Ancient History
Sámi Archaeology and
heritage



Adjunct Associate Professor
Joe WATKINS
University of Arizona
School of Anthropology
Archaeology



Professor Peter JORDAN
Lund University
Department of Archaeology
and Ancient History
Archaeology and
Ethnography



Professor Aleksandr POPOV
Far Eastern Federal
University
Educational and Scientific
Museum of the School of
Arts and Humanities
Archaeology and Cultural
Heritage



Dr. Kanako UZAWA
Associated Researcher
University of Oslo
Historical Museum
Urban Indigeneity,
Indigenous Rights,
Museum Studies, Ainu
Performing Arts

Hokudai



Professor
Takayoshi YAMAMURA
Center for Advanced
Tourism Studies
Tourism Studies



Professor
Koji YAMASAKI
Center for Ainu and
Indigenous Studies
Cultural Anthropology,
Museum Studies



Associate Professor
Akiko TASHIRO
Research Faculty of Media
and Communication
Area Studies



Professor
Johan EDELHEIM
Research Faculty of Media
and Communication
Cultural Studies

Indigenous Heritage Research Unit

Human Ecology & Global Health Research Unit

Unit

Overseas Unit



Associate Professor
Mayumi OKADA
Center for Advanced
Tourism Studies
History



Associate Professor
Meng QU
Center for Advanced
Tourism Studies
Art & Regional
Revitalization, Creative
Tourism Geography, Island
Studies



Associate Professor
Itsuji TANGIKU
Center for Ainu and
Indigenous Studies
Oral literature, linguistics



Dr. Jilda ANDREWS
The Australian National
University
National Museum of
Australian
Critical Heritage Studies,
Museum Studies



Professor
Laurajane SMITH
The Australian National
University
Centre for Heritage and
Museum Studies
Critical Heritage Studies



Professor Cressida FFORDE
The Australian National
University
Center for Heritage and
Museum Studies
Indigenous Studies,
Heritage, Museum Studies



Associate Professor
Tianxin ZHANG
Peking University
College of Architecture and
Landscape
Heritage and Tourism



Dr. Gareth KNAPMAN
The Australian National
University
Centre for Heritage and
Museum Studies
Heritage and Museum
Studies



Dr. Michael PICKERING
National Museum of Australia
Australian National University
Senior Repatriation Advisor
Honorary Associate Professor
with the
Department of Museum and
Heritage Studies

Hokudai Unit

Overseas Unit



Professor Taro YAMAUCHI
Faculty of Health Sciences
Health Science



Assistant Professor
Akira SAI
Center for Ainu and
Indigenous Studies
Health Psychology, Human
Ecology, Area Studies



Professor
Masatoshi SASAKA
Graduate School of
Humanities and Human
Sciences
Environmental Sociology,
Indonesian Area Studies



Assistant Professor
Sikopo NYAMBE
Center for Ainu and
Indigenous Studies
Health Science



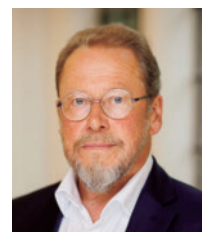
Professor Elena GODINA
Lomonosov Moscow State
University
Institute and Museum of
Anthropology
Department of
Anthropology and Biology
Biological Anthropology



Professor
J. Josh SNODGRASS
University of Oregon
Department of
Anthropology and Global
Health Program
Evolutionary Medicine



Professor
Thomas THORNTON
University of Alaska
Alaska Coastal Rainforest
Center
Environmental
Anthropology



Professor Stanley ULJASZEK
University of Oxford
School of Anthropology
Unit for Biocultural Variation
and Obesity
Nutritional Anthropology
and Human Ecology

Global Station for Indigenous Studies and Cultural Diversity, Hokkaido University

Kick-Off Symposium 2022

-Indigeneity, Global Heritage and Global Health-

ADMISSION FREE

ONLINE

2022

JAN 21

FRI. ~

22

SAT.

Event Outline

<p>January 21 (Fri. GST)</p> <p>Part 1 15:00~17:15 Welcome Remarks</p> <p>17:30~18:30 Opening Remarks</p> <p>17:45~18:40 Commemorative Lecture I</p> <p>18:45~19:45 Commemorative Lecture II</p>	<p>Prof. Kohtaro HOSOKI Director of Institution for Collaborative Research and Education/ President, Hokkaido University SDC, Sustainability Studies at HU and GSI Executive Vice President International Affairs, SDOU/ Vice-Chief of Global Institute for Collaborative Research and Education, Hokkaido University Vice-Chief of Global Heritage of the Commons Speaker Prof. Steve DODDGE Director of the Institute of Anthropology, University of Oxford</p> <p>Guest Instructors for Collaborative Research and Education, Hokkaido University Representative of the Indigenists: A European Perspective Speaker Prof. Peter DODDGE Department of Anthropology, Lund University Guest Instructors for Collaborative Research and Education, Hokkaido University</p>
<p>Part 2 (GST members only) 17:30~19:00 Round Discussion</p> <p>January 22 (Sat. GST)</p> <p>9:30 ~ 1:00 Opening Remarks</p> <p>9:15~10:15 Commemorative Lecture III</p>	<p>Members of the Indigeneity Research Unit</p> <p>Prof. Hirotaka KATO Director of Global Institute for Indigenous Studies and Cultural Diversity, Hokkaido University Indigeneity and Anthropology: Future Pathways and Partnership Speaker Prof. Jani KATZKE University of Arizona Guest Instructors for Collaborative Research and Education, Hokkaido University</p> <p>Members of the Indigenous Heritage Research Unit Members of Human Ecology and Global Health Research Unit</p>

How to Register

Registration

Online

Language

Prior registration is required to attend this event.

For registration, please visit GSI official website (SD homepage) below:
 17:00 Thursday, January 20th (JST)
 Online (with Japanese simultaneous interpretation)

CONTACT

Global Station for Indigenous Studies and Cultural Diversity (GSI-IR)
 Global Institute for Collaborative Research and Education (GSI-RE)
 Hokkaido University
 Email: info@gsi.hokudai.ac.jp
 Web: <http://www.gsi.hokudai.ac.jp/gsi/>

Hokkaido University

Global Station for Indigenous Studies and Cultural Diversity

GSI

Lecture Series

2022

Vol.14

■ Online
■ Admission Fee: Free

GSI is hosting this series of online lectures by GSI members.
Meet our world-class researchers. Learn about them and their specialty.

Vol.1 Tuesday APR 12 9:00 - 10:45	<p>"A chronological and geographical overview of the Archaeology of the United States"</p> <p>Professor Jay Watkins</p> <p>University of Arizona</p> 
Vol.2 Tuesday MAY 17 13:00 - 15:45	<p>"The spread of Sejima Turbino axes in the large coniferous forest"</p> <p>Professor Mika Lavento</p> <p>University of Helsinki</p> 
Vol.3 Tuesday JUN 7 16:00 - 18:45	<p>"The Children of Ash and Elm: an emic agenda for the Viking diaspora"</p> <p>Professor Nell Price</p> <p>Uppsala University</p> 
Vol.4 Tuesday JUL 26 13:00 - 15:45	<p>"Integrating Indigenous knowledges in to museum exhibitions and national narratives"</p> <p>Doctor Jilda Andrews</p> <p>The Australian National University / National Museum of Australia</p> 



Contact & Registration

Global Station for Indigenous Studies and Cultural Diversity

E-mail: gsi@isa.hokudai.ac.jp

Website: <https://gpi-core.isa.hokudai.ac.jp/gripr/>




Online

GSI Lecture Series

Vol.4

Tuesday, 26th JULY 2022

3:00-3:45pm (JST)

"Integrating Indigenous knowledges in national exhibitions and national narratives"

In May of 2022 the National Museum of Australia launched its new permanent gallery of environmental history - *Great Southern Land*. Through various means including Audio-Active, Community Engagement Concussion, Curator and later on as the project's Producer, Jilda Andrews worked alongside a multidisciplinary team to explore the opportunities to use and craft emerging the Indigenous knowledge of Country in the to the national narrative and introduce the concept to mainstream audiences and international audiences.

By exploring contemporary curatorial practices and collaborative engagements with Indigenous designers and audiences, this work provides a brief of the most challenging, revealing and daunting work ever undertaken in the 21 years of working at museums. This presentation will talk about what it means to integrate Indigenous knowledge at the nexus of a national narrative and at the interface of worldviews.



Dr. Jilda Andrews

The Australian National University, National Museum of Australia

Dr Jilda Andrews is an Indigenous Australian cultural practitioner and museum professional based in Canberra. Jilda draws from her heritage to investigate the complexities of land, story and culture in objects in museum collections. Her focus on material culture and oral historical stories continues to be a definition of citizenship from one which is used on the preservation of objects, to one which is used to maintain connections between objects and the systems which produce them.

- How to register: Please visit the registration form from the URL below or 2D Barcode: <https://forms.gle/g4k7Cvct1BUHt1t6>
- Registration Deadline: Friday, 22nd July
- Admission Fee: FREE ● Platform: Zoom meeting



QR Code
for Registration

- Contact
Global Station for Indigenous Studies and Cultural Diversity
Email: gsi@noma.hokudai.ac.jp
Website: <http://www.gsi.orc.noma.hokudai.ac.jp/gsi/>




HOKKAIDO UNIVERSITY


Special Lecture

"Multi-cultural tourism related to Indigenous people in China"

by Dr. Tianxin Zhang

August 26th, 2022 (Fri)

14:30-15:45pm Japan time

Zoomed online free admission
Registration via Google Form below

<https://forms.gle/5XUWYXAGET5VNA>




Tianxin Zhang is an associate professor in College of Architecture and Landscape Architecture, Peking University and also a member of GSI. His research interests include urban design methodology and theory, built-environment heritage, heritage preservation, national park planning, tourism planning, etc. His research and planning projects include the Influence of Tourism on the Old Town of Lijiang as a world heritage, master planning of Nanjing(Jiangnan) National Scenic Area, tourism planning of Fujian city, etc.


 Prof. Shinroku Kato
 Center for Asia and
 Midwestern Studies


 Prof. Tianxin Zhang
 Center for Advanced Studies
 (Architecture)


 Prof. Mitsuhiko Yamamura
 Research Faculty of Science
 (Earth and Environmental
 Science)


 Prof. Yuki Watanabe
 University of Aizu

Lecture Abstract: Chinese indigenous people were recognized as 56 "ethnicity groups" since 1949. Special policies and laws were made, and self-governing regions were set up to allow them to develop in their own way. Tourism in these areas has been growing since 1980s. Many of their cultural and natural resources, including language and intangible heritages, have been under protection. From multi-cultural point of view, these resources are rare and unique, and are important components of heritages for Chinese culture as a whole. However, they also experience difficulties facing mass tourism demands since 2003. This presentation will take Naxi minority people in Lijiang city, Yunnan province as a case study, and show how the people's lives and their life spaces have changed due to tourism development. The life-cycle of its tourism process will be analyzed, and the value of "immersive tourism" is emphasized.

Organizers

Global Studies for Indigenous Studies
 and Cultural Diversity
 Center for Advanced Studies Studies




Contact

gsl@hokkaidu.ac.jp


 HOKKAIDO UNIVERSITY

Special Lecture -Vol.2

“Changing Directions in Indigenous Research Ethics”

2022

October

6th Thur

14:45 - 16:15 JST

Lecturer Address

Today there is need and urgency in increased research ethics involving indigenous peoples in the context of new technologies, changing politics, and rising research ethics human rights, particularly in the UN Declaration on the Rights of Indigenous Peoples. Key questions emerging in archaeology and heritage studies include: How should we develop or authorize such research? Who should have access to or control research results? And who should benefit? I discuss these issues as they relate to emerging trends in paleogenomics (DNA/RNA), ancestral human remains, intellectual property, data sovereignty, 3D scanning and remote sensing, traditional knowledge, and community-directed or -oriented research methods. I also share the responsibilities of individual researchers, professional organizations, and universities engaged in research on indigenous peoples and their heritage, and the need to review and revise the policies that guide them.

Professor

GEORGE NICHOLAS



George Nicholas is Distinguished Professor of Archaeology, Simon Fraser University, Professor, Global Studies, Anthropology, Heritage Studies and Education, Indigenous Studies, and Senior Researcher, Pacific Peoples Institute. He has worked with, and for, indigenous peoples in North America, South America, Africa, Europe, Asia, and Oceania, and has published widely in the field. He is also a past president of the American Anthropological Association and the Society for American Archaeology. He is the author of *Indigenous Archaeology: Theoretical Issues, Research Approaches, and Future Possibilities* (2013), and co-author of *Indigenous Archaeology: Theoretical Issues, Research Approaches, and Future Possibilities* (2013), and co-author of *Indigenous Archaeology: Theoretical Issues, Research Approaches, and Future Possibilities* (2013).

Organizers

Center for Asian and Indigenous Studies
Global Studies in Indigenous Studies and Cultural Diversity
Hokkaido University

Registration

Via Google Form
<https://forms.gle/XenVnCoCT8rKAC67>

Contact

Global Studies for Indigenous Studies and Cultural Diversity
 naoko.gillio@hokudai.ac.jp
Website: https://igp-core.hokudai.ac.jp/gsi/

Platform

Zoom meeting



[illegible]





















































































































































Special Lecture -Vol.3

"Archaeologies of the Ragnarök: A Sixth-Century Climate Disaster and Its Viking-Era Legacies"

15:15 - 16:45 JST

HOKKAIDO UNIVERSITY

2023

Jun

6th Tues

Speaker

There is a new general agreement among geoscientists that in the year 536 CE, and for varying lengths of time thereafter, most parts of the northern hemisphere experienced a prolonged solar dimming. Caused by a layer of stratospheric dusts from at least two, and possibly more, major volcanic eruptions occurring in the period 536-540, what is now known as the 'Little Ice Age' began its warm from reaching the earth. Numerous textual sources independently describe what was clearly a climate disaster of some magnitude, with a range of catastrophic effects including crop failure, famine and civil unrest. The impact was especially severe in the marginal environments of Scandinavia, where the impact of the ice, before society gradually recovered (and took new forms), in the following centuries led up to the Viking Age. Some scholars, including myself, have suggested that a distant memory of the dust veil lay behind the story of the Fimbulvetur, the three-year season of 'warring cold and darkness' that marked the beginning of the Ragnarök, the end of the world in Norse mythology. Drawing on both archaeology and text, this talk will explore this unprecedented climate disaster as affected the peoples of late Iron Age Scandinavia.

Professor

Neils Price

Neil Price holds the Chair of Archaeology at Uppsala University, Sweden, where he has also been appointed Distinguished Professor by the Swedish Research Council. He is the co-lead of the international EU project Scandinavia and Beyond, a leading expert on the Viking Age, its Eastern, western, and recent has been named the 'most powerful' archaeologist in the world, and a Fellow of numerous learned associations in Britain and Scandinavia, including Sweden's Royal Society of Sciences, in 2007 he awarded him the Thorpe prize for his lifetime achievements in Viking studies. His publications have appeared in 20 languages, and he is a frequent contributor to commentary in television and film.

Organizer

Global Studies for Indigenous Studies and Cultural Diversity
Hokkaido University

Contact

Global Studies for Indigenous Studies and Cultural Diversity
Email: gsid@hokudai.ac.jp
Website: <http://gijp-center.hokudai.ac.jp/gij/>

Registration

Visit Google Form
<https://forms.gle/6MhJGfR9XGt7dA9A>

Admission Fee

Free

Platform

Zoom meeting

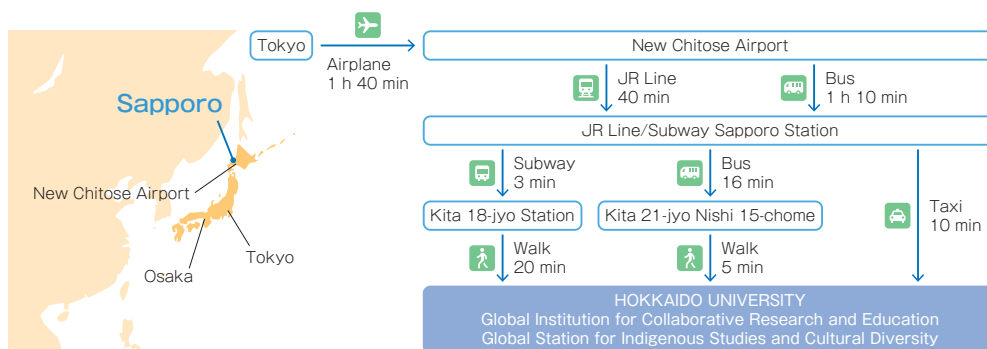




[illegible]



Access



Contact Information

E-mail : gsi@oia.hokudai.ac.jp

Tel : +81-(0)11-706-7324

Web : <https://gi-core.oia.hokudai.ac.jp/gsi/>

Address : Northern Campus Research Building
No.3 - 106

Kita-21, Nishi-11, Kita-ku, Sapporo 001-0021, JAPAN

〒001-0021 北海道札幌市北区北21条西11丁目 北キャンパス総合研究棟3号館106室