



GS

北海道大学国際連携研究教育局
先住民・文化的多様性研究グローバルステーション

©KOI YUKI

Global Institution for Collaborative Research and Education

Global **S**tation for **I**ndigenous Studies and Cultural Diversity



HOKKAIDO UNIVERSITY

Greetings from the Director

The Global Station for Indigenous Studies and Cultural Diversity (GSI) was established in April 2021 as the eighth Global Station of the Global Institution for Collaborative Research and Education (GI-CoRE), headed by the President of Hokkaido University. Following its inaugural year, Professor Joe Watkins from the United States of America arrived in July 2022 as the first full-time overseas unit member to conduct joint research on Indigeneity through a comparative study of the Indigenous peoples of the USA and the Ainu people of Hokkaido. That same month, Associate Professor Tianxin Zhang from Peking University visited the GSI for three months as an invited faculty member to conduct fieldwork and joint research on Indigenous cultural heritage in Hokkaido and Okinawa.

One of the key roles of the GSI is to provide a platform for international collaborative research on Indigenous Peoples and Cultural Diversity. The island of Hokkaido is part of the traditional homelands of the Ainu, the Indigenous people of Japan, and, therefore, Indigenous land. We aim to provide an opportunity for researchers from all over the world to gather in Sapporo, the capital city of Hokkaido, and to nurture the seeds of new collaborative research.

Our inaugural symposia and lecture series had to be hosted online due to the global spread of Covid-19. Despite these conditions, 133 participants from 23 universities and research institutions in 16 countries engaged in lively discussions throughout our kick-off symposium held in January 2022. Additionally, we hosted an online lecture series in April 2022 for overseas researchers unable to enter Japan at the time to introduce their research.

The GSI will continue to bring awareness to the common challenges faced by Indigenous peoples around the world, discuss effective approaches to solving these challenges, foster the next generation of researchers, and above all, lead international discussions on the nature of cultural diversity in human society.

1st October 2022

Director of the GSI / Professor, Hirofumi KATO

GSI長挨拶

先住民・文化的多様性研究グローバルステーションは2021年4月に、北海道大学総長を局長とする国際連携研究教育局の8つ目の拠点として設立されました。設立からほぼ一年を経過し、2022年7月には、最初の外国人正規教授としてアメリカ合衆国よりジョー・ワトキンス教授が着任し、アメリカ先住民と北海道のアイヌ民族の比較を通じて先住性に関する共同研究をスタートさせています。また先住民文化遺産の領域では、北京大学の張天新准教授が7月に招へい教員として着任し、9月までの3ヶ月間にわたり北海道や沖縄でフィールドワークと共同研究を実施しました。

GSIの重要な役割の一つは、先住民と文化的多様性に関する国際共同研究のプラットフォームを提供することです。北海道は日本の先住民族であるアイヌ民族が長く暮らしてきた先住民族の大地です。その中心都市である札幌に世界各地から研究者が集い、新たな共同研究の芽を育てるきっかけを提供して行きたいと考えています。

GSIの設立当初は、新型コロナウイルスの世界的蔓延の影響を受けて、国際シンポジウムや連続講義もオンライン開催を余儀なくされてきました。そのような厳しい状況下でも2022年1月に開催されたキックオフシンポジウムには、16カ国の23の大学研究機関から133名が参加し、活発な議論を交わしました。来日できない海外の研究者も2022年4月から開催された連続講義を通じて、互いの研究を紹介し、新たな課題の抽出に取り組んでいます。

GSIでは、これからも世界の先住民の抱える共通課題を共有し、課題解決へ向けた効果的な取組みを協議検討すること、次世代の研究者の育成に寄与すること、そして何よりも人類社会の文化的多様性の本質について国際的な議論をリードしていきたいと考えています。

2022年10月1日

GSI代表 / 教授 加藤博文

GSI Action Plan: Our Goals

The Global Station for Indigenous Studies and Cultural Diversity (GSI) has established an Indigenous Action Plan consisting of the five steps listed below. The plan aims to create an environment that reflects, includes, and supports Indigenous culture and the dignity of Indigenous peoples throughout the university.

Transforming Intent into Action

1 Promote understanding of Indigenous peoples:

We foster a greater understanding of Indigenous rights, including those of the Ainu people, and promote respect across the university for Indigenous peoples.

2 Provide curricula on Indigenous peoples and cultural diversity:

Through the Hokkaido Summer Institute and other initiatives, we propose and develop educational curricula that better enable students to understand the importance of Indigenous perspectives, ways of knowing, and worldviews.

3 Increase Indigenous participation in all research activities:

In addition to actively inviting researchers from Indigenous communities to international symposia and lecture series organized by GSI, we host events open to Indigenous communities outside the university to share research results and discuss issues.

4 Support early career researchers:

We aim to support the development of early career researchers. In particular, we create opportunities for Indigenous early career researchers to engage in international discussions and interact with leading scholars from different countries.

5 Support the reestablishment of Indigenous cultural landscapes:

As a campus located on traditional Ainu land, we advocate for reforms that ensure Hokkaido University's campus reflects the culture and worldview of the Ainu.

GSIアクションプラン

先住民・文化的多様性研究グローバルステーションはその活動において、以下の5つのテーマで構成される「先住民アクションプラン」を定めます。この計画は、アカデミアとしての大学コミュニティ全体に先住民族の文化と尊厳を反映、包含、支援する環境づくりを目指すものです。

1 先住民族に関する理解の促進

アイヌ民族を含む先住民族の権利を理解し、先住民族に対する畏敬の念が北海道大学内部で促進される機会を提供します。

2 先住民族に関する文化的多様性に関するカリキュラムの提供

Hokkaido Summer Institute などを通じて、先住民族の考え方や文化的多様性の重要性を理解できる教育カリキュラムの構築や提案をおこないます。

3 研究活動への先住民族の参画

GSI が企画する国際シンポジウムや連続講義に先住民族出身の研究者を積極的に招へいするほか、学外の先住民族コミュニティにも開かれた研究成果の共有や問題討議の機会を作ります。

4 人材育成への努力

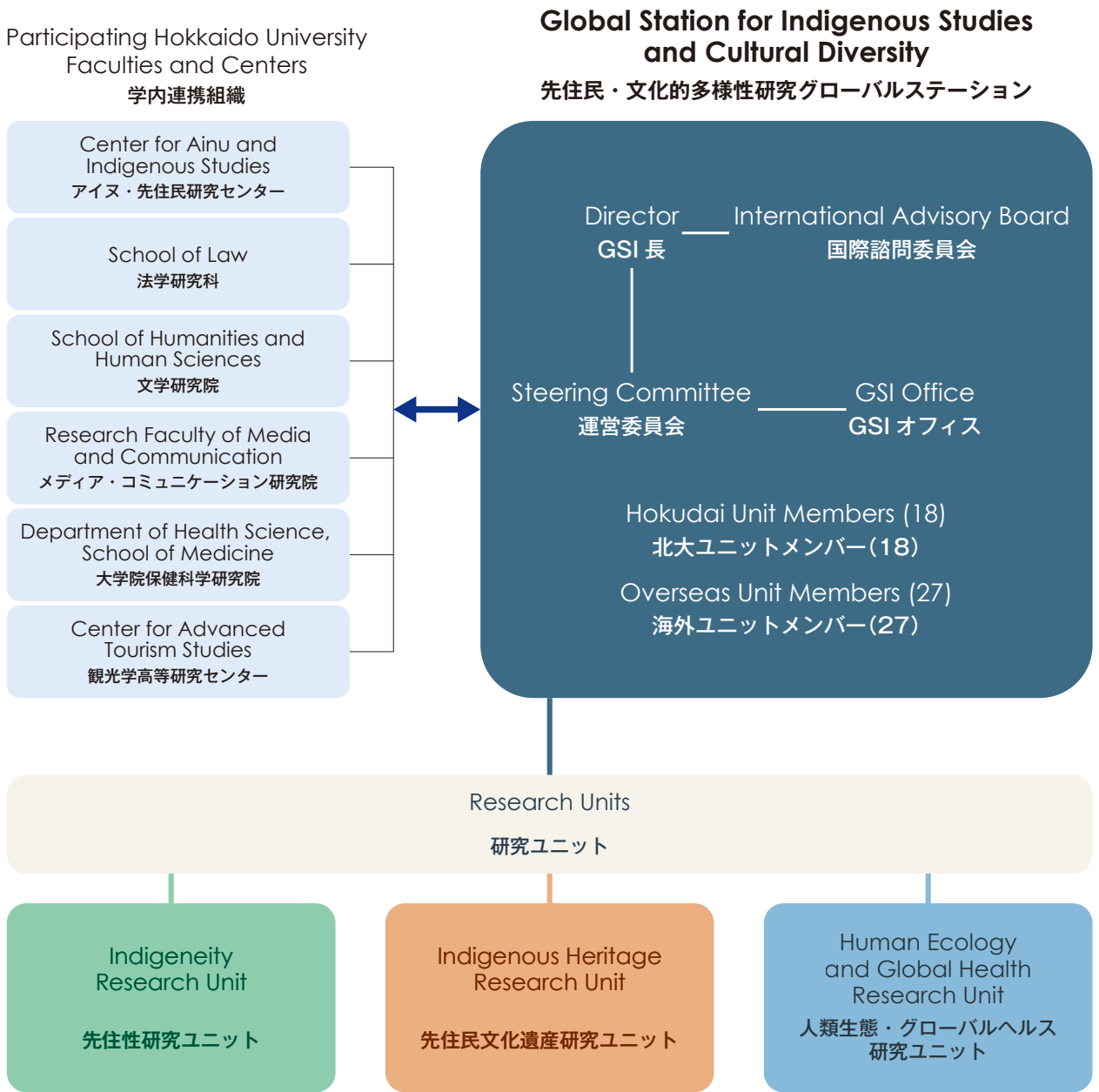
若手研究者育成に努力します。とりわけ先住民族出身の若手研究者が国際的な議論を行い、各国の多彩な研究者と交流可能な機会を創出します。

5 先住民文化的景観の構築支援

アイヌ民族の大地に位置するキャンパスとして、北海道大学のキャンパスがアイヌ民族の文化観や世界観を反映したものであるように積極的に改革案を提案します。

GSI Structure

GSI組織図



GSI Milestones

GSIマイルストーン





Indigeneity 先住性	Indigenous Heritage 先住民文化遺産	Human Ecology and Global Health 人類生態・グローバルヘルス
<ul style="list-style-type: none"> <p>The construction of a new history of humanity, Ainu history, and Indigenous history from Indigenous perspectives 先住民族の視点から新しい人類史、アイヌ史、先住民族史の構築</p> <p>The adoption of an interdisciplinary approach to the study of Indigeneity 先住性に関する学際的研究</p> <p>The development of a model of research ethics for Indigenous studies and Indigenous cultural policies 先住民研究のための研究倫理モデルの構築と先住民文化政策の提案</p> 	<ul style="list-style-type: none"> <p>Engagement in issues related to the features, conservation, and use of Indigenous cultural heritage 先住民族の文化遺産の特徴、保存、利用に関する研究課題への対応</p> <p>An international comparative study of Indigenous cultural heritage and related intellectual property rights 先住民族の文化遺産と関連する知的財産権に関する国際比較研究</p> <p>An international comparative study on Indigenous cultural heritage and tourism, including Ainu cultural heritage アイヌ文化遺産を含む先住民文化遺産と観光に関する国際比較研究</p> 	<ul style="list-style-type: none"> <p>An international comparative study of traditional resource management in Indigenous societies 先住民社会における伝統的資源管理に関する国際比較研究</p> <p>An international comparative study of the ecology of child development, food systems, and nutrition in Indigenous societies 先住民社会における子どもの発達、食糧システム、栄養の生態に関する国際比較研究</p> <p>The development of regional models and produce policy proposals for the conservation of cultural diversity 文化的多様性の保存のための地域モデルの構築と政策提言</p>

1 University of Oxford



オックスフォード大学

5 University of Helsinki



ヘルシンキ大学

2 University of Oslo



オスロ大学

3 Uppsala University



ウプサラ大学

4 Lund University



ルンド大学

6 Moscow State University



モスクワ国立大学

7 Irkutsk State University



イルクーツク国立大学



8 Peking University



北京大学

13 University of Alaska



アラスカ大学

15 University of Oregon



オレゴン大学

★ Hokkaido University



13

14

15

16

14 Simon Fraser University



サイモンフレーザー大学

16 University of Arizona



アリゾナ大学

9 Far Eastern Federal University



極東連邦大学

10 National Taiwan University



国立台湾大学

11 The Australian National University



オーストラリア国立大学

12 The University of Melbourne



メルボルン大学

Unit Members

ユニットメンバー

Indigeneity Research Unit 先住性研究ユニット

Hokudai Unit



Professor
Hirofumi KATO
Center for Ainu and
Indigenous Studies
Indigenous Archaeologies,
Indigenous Heritage



Professor
Jeffrey GAYMAN
Research Faculty of Media
and Communication
Indigenous Education,
Education Anthropology



Professor
Akihisa TANIMOTO
Graduate School of
Humanities and Human
Sciences
Japanese History, Ainu
History



Professor
Yasuo TSUJI
Graduate School of Law
Political Theory



Professor
Masato YOSHIKAI
Graduate School of
Humanities and Human
Sciences
Chinese History



Associate Professor
Mai ISHIHARA
Center for Ainu and
Indigenous Studies
Cultural Anthropology,
Indigenous Research



Associate Professor
Ken-ichi OCHIAI
Center for Ainu and
Indigenous Studies
Ainu Policies, Indigenous
Policies



Professor
Rick SCHULTING
University of Oxford
School of Archaeology
Archaeology



Professor
Joe WATKINS
University of Arizona
School of Anthropology
Indigenous Archaeology

Overseas Unit



Professor
Maa-ling CHEN
National Taiwan University
Department of
Anthropology
Archaeology



Professor
Aaron CORN
The University of Melbourne
Indigenous Knowledge
Institute
Indigenous Knowledge,
Ethnomusicology



Professor
Peter JORDAN
Lund University
Department of Archaeology
and Ancient History
Archaeology and
Ethnography



Professor
Sho KONISHI
University of Oxford
Associate Professor in
Modern Japanese History
Director of the Nissan
Institute of Japanese Studies
History



Professor
Mika LAVENTO
University of Helsinki
Department of Cultures
Archaeology



Professor
Aleksandr POPOV
Far Eastern Federal University
Educational and Scientific
Museum of the School of
Arts and Humanities
Archaeology and Cultural
Heritage



Professor
Neil PRICE
Uppsala University
Department of Archaeology
and Ancient History
Archaeology



Associate Professor
Chih-Hua CHIANG
National Taiwan University
Department of
Anthropology
Archaeology and
Anthropology



Associate Professor
Carl-Gösta OJALA
Uppsala University
Department of Archaeology
and Ancient History
Sámi Archaeology and
Heritage



Assistant Professor
Kanako UZAWA
University of Oslo
Historical Museum
Urban Indigeneity,
Indigenous Rights

Hokudai



Professor
Takayoshi YAMAMURA
Center for Advanced
Tourism Studies
Tourism Studies



Professor
Koji YAMASAKI
Center for Ainu and
Indigenous Studies
Cultural Anthropology,
Museum Studies



Associate Professor
Meng QU
Center for Advanced
Tourism Studies
Tourism, Geography, Island
Studies

Indigenous Heritage Research Unit 先住民文化遺産研究ユニット

Human Ecology & Global Health Research Unit 人類生態・グローバルヘルス研究ユニット

Unit Overseas Unit

Hokudai Unit Overseas Unit



Professor
Johan EDELHEIM
Research Faculty of Media
and Communication
Cultural Studies



Professor
Cressida FFORDE
The Australian National
University
Centre for Heritage and
Museum Studies
Indigenous Studies



Professor
Barry JUDD
The University of Melbourne
Office of the Provost |
Chancellery
Indigenous Studies



Professor
Taro YAMAUCHI
Faculty of Health Sciences
Health Science



Professor
Richard CHENHALL
The University of Melbourne
Melbourne School of
Population and Global
Health
Medical Anthropology



Professor
Elena GODINA
Lomonosov Moscow State
University
Institute and Museum of
Anthropology
Biological Anthropology



Associate Professor
Mayumi OKADA
Center for Advanced
Tourism Studies
*Public Archaeology
Heritage Studies*



Professor
George NICHOLAS
Simon Fraser University
Department of
Archaeology
Indigenous Archaeology



Professor
Laurajane SMITH
The Australian National
University
Centre for Heritage and
Museum Studies
Critical Heritage Studies



Professor
Masatoshi SASAOKA
Graduate School of
Humanities and Human
Sciences
*Environmental Sociology,
Indonesian Area Studies*



Professor
J. Josh SNODGRASS
University of Oregon
Department of
Anthropology and Global
Health Program
Evolutionary Medicine



Professor
Thomas THORNTON
University of Alaska
Alaska Coastal Rainforest
Center
*Environmental
Anthropology*



Associate Professor
Itsuji TANGIKU
Center for Ainu and
Indigenous Studies
Oral Literature, Linguistics



Associate Professor
Michael PICKERING
The Australian National
University
Centre for Heritage and
Museum Studies
*Museum and Heritage
Studies*



Associate Professor
Tianxin ZHANG
Peking University
College of Architecture and
Landscape
Heritage and Tourism



Assistant Professor
Sikopo NYAMBE
Center for Ainu and
Indigenous Studies
Health Science



Professor
Stanley ULJASZEK
University of Oxford
School of Anthropology
Unit for Biocultural Variation
and Obesity
*Nutritional Anthropology
and Human Ecology*



Associate Professor
Akiko TASHIRO
Research Faculty of Media
and Communication
Area Studies



Dr. **Jilida ANDREWS**
The Australian National
University
National Museum of
Australia
*Critical Heritage Studies,
Museum Studies*



Dr. **Gareth KNAPMAN**
The Australian National
University
Centre for Heritage and
Museum Studies
*Heritage and Museum
Studies*



Assistant Professor
Akira SAI
Center for Ainu and
Indigenous Studies
Health Psychology
*Human Ecology, Area
Studies*



GSI Members in attendance at the 2023 Symposium



2023 Reibun Field School

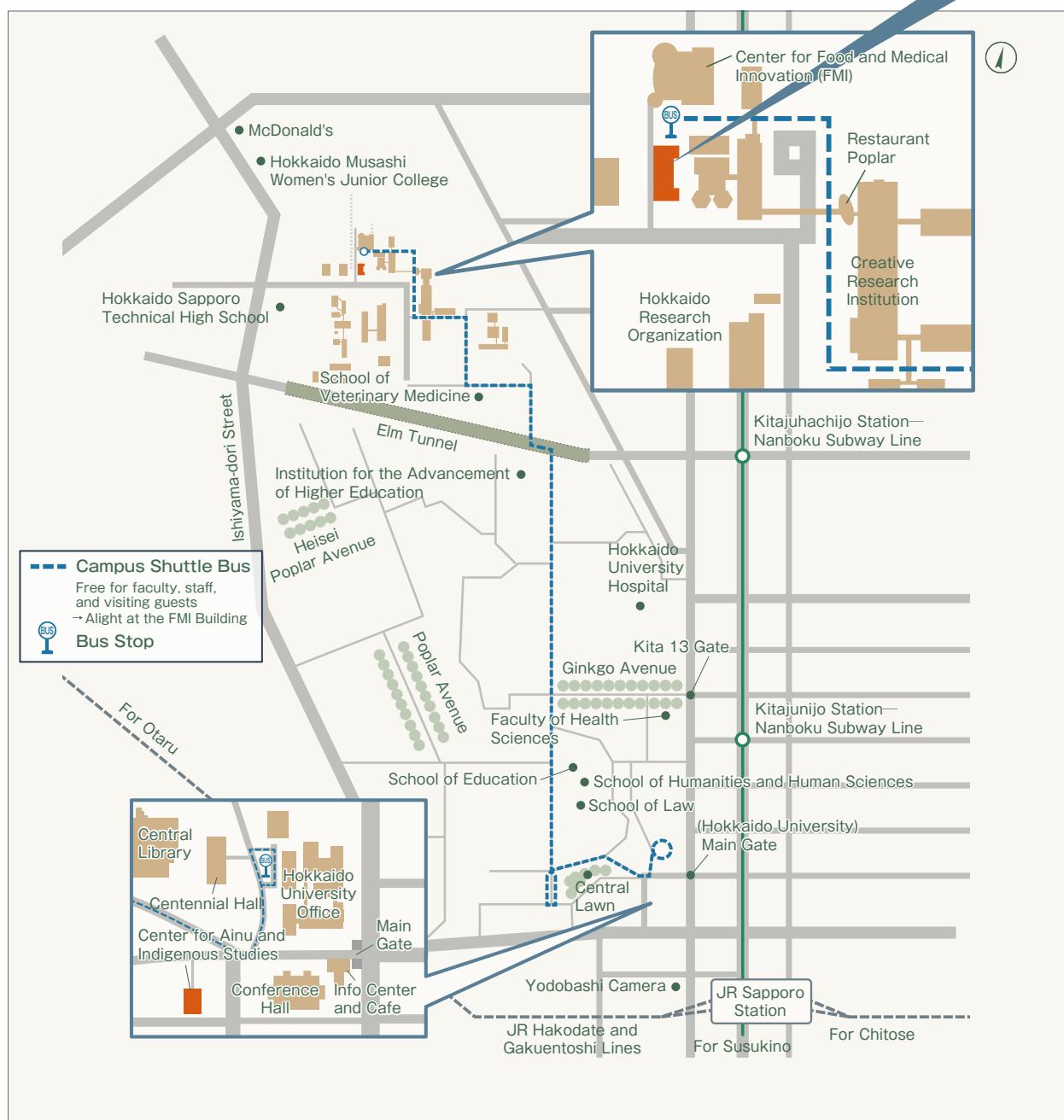


2023 Hokkaido University—The University of Melbourne Conference



GSI Office

Access



Contact Information

E-mail : gsi@oia.hokudai.ac.jp Tel : +81-(0)11-706-7324 Web : <https://gi-core.oia.hokudai.ac.jp/gsi/>
 Address : Northern Campus Research Building No.3 - 106, Kita-21, Nishi-11, Kita-ku, Sapporo 001-0021, JAPAN

〒001-0021 北海道札幌市北区北21条西11丁目 北キャンパス総合研究棟3号館106室