



13:00-18:30
Friday
Dec. 1, 2023
JST

“Migration and Memory of Place”

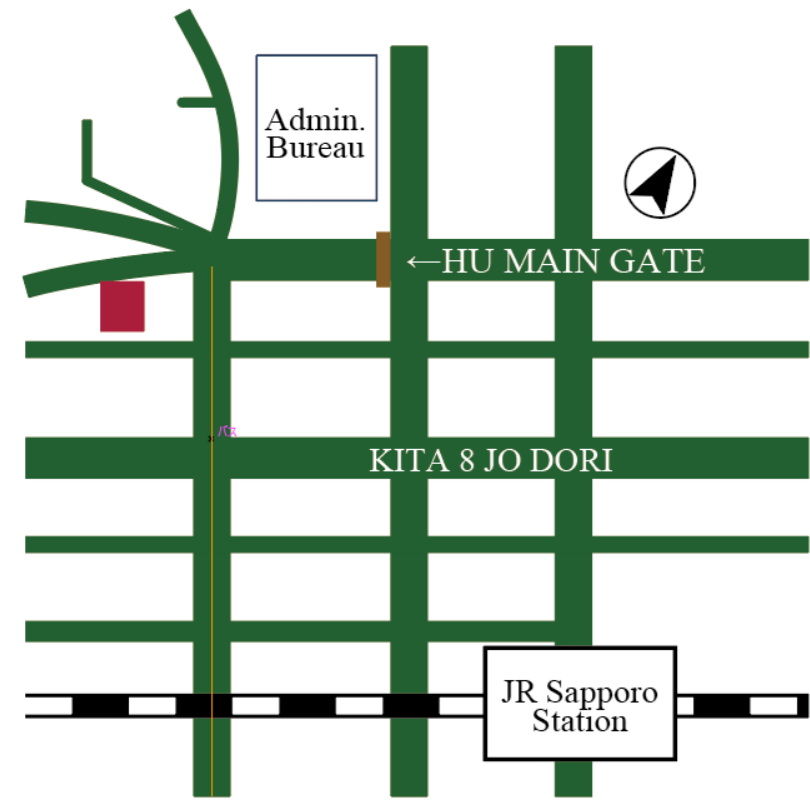
Admission:

Free

Venue:

Conference Room,
Center for Ainu &
Indigenous Studies,
Hokkaido University

Access:



Language:

English

Organized by:

Global Station for
Indigenous Studies
and Cultural Diversity
(GSI)

Supported by:

The Foundation for Ainu Culture

Contact:

E-mail: gsi@oia.Hokudai.ac.jp

HP: <http://gi-core.oia.Hokudai.ac.jp/gsi/>

Registration required:

Registration form for Online participation

https://us02web.zoom.us/webinar/register/WN_68Z0Na53RAeMtM_EPL-cpA



Prof Neil PRICE
Uppsala University,
Hokkaido University
*“Norse Migration in the
Viking Age
: from ‘Expansion’ to
‘Diaspora’”*



Prof Peter JORDAN
Lund University,
Hokkaido University
*“Environmental Catastrophes
Drive Human Migration :
Apocalyptic Scenes from A
Prehistoric “Super-Eruption”*



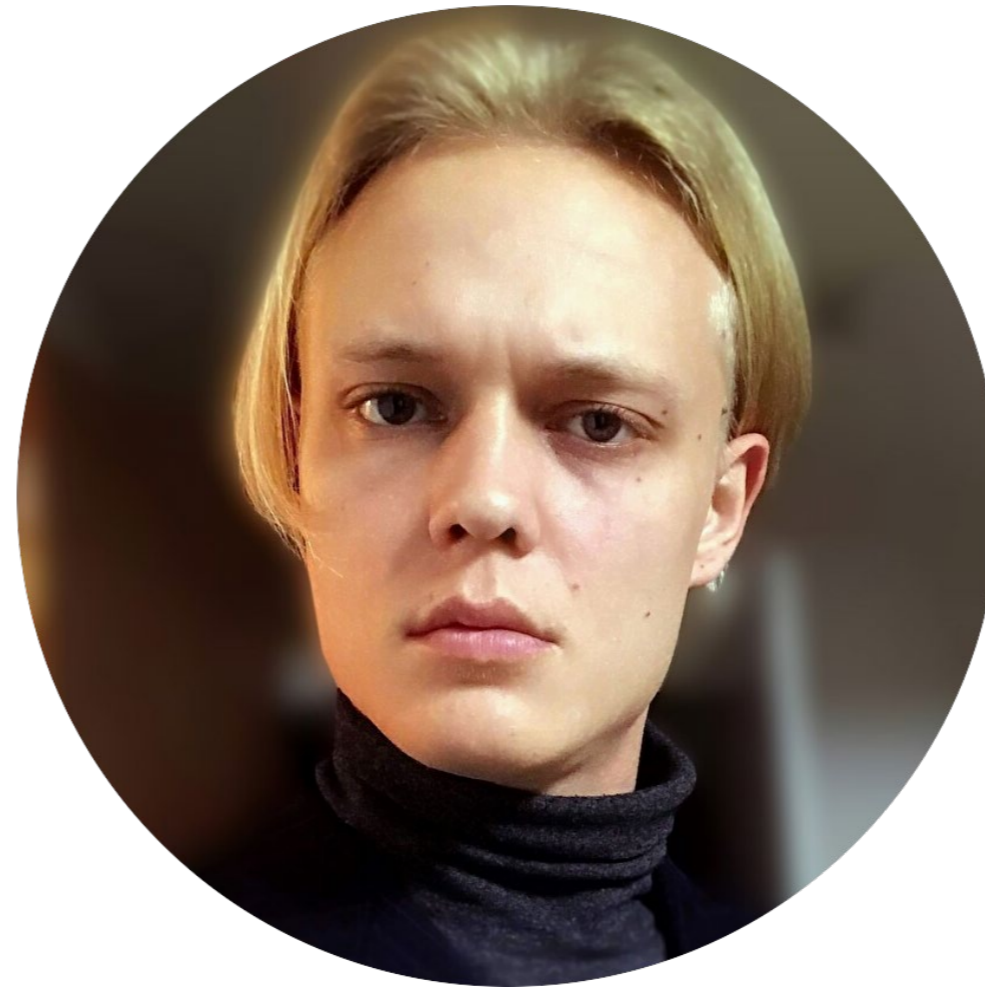
Prof Hirofumi KATO
Director of GSI
Hokkaido University
*“Okhotsk Migration in NE
Asia: Colonization and
Cultural Integration”*



Dr Carl-Gösta OJALA
Uppsala University,
Hokkaido University
*“Sámi Mobilities in
Colonial Spaces’
Border, Identities, and
the Right to Make a
Home”*



Dr Kristen SMITH
Mr Levi-Craig MURRAY
Onemda Aboriginal & Torres
Strait Islander Health and
Wellbeing, Melbourne School of
Population & Global Health,
University of Melbourne
*“Aboriginal placenames and
geospatial data: Promoting
truth-telling and understanding
of Country.”*



Mr Aleksander ULANOV
Hokkaido University
*“The theory of cultural
transmission and studies
of social contacts of
hunter-gatherers”*



Hokkaido University

Global Institution for Collaborative Research and Education